

BETA

Better visibility, better protection

Beta welding helmets provide superb lightweight eye and face protection for all welding, cutting, grinding and inspection purposes. Designed for professional welders and certified to EN175 B, Beta welding helmet range includes either passive or auto-darkening filters.

All Beta models feature the same lightweight but strong shell construction, a comfort headband, GapView flip lens function and magnifying lens frame. When combined with a Kemppi PAPR system, Beta FA models offer TH2 respiratory protection for your lungs.

- Protection for welding, grinding and cutting
- Super lightweight, starting at just 473 g
- Flip-lens with GapView stage position
- Extra protection to face and neck
- ADF and passive lens models
- Comfort headband
- Leather neck protector option
- Magnifying lens frame



BETA WELDING HELMETS

Designed for professional welders and certified to EN175 B and AS/NZS 1337.1 for welding, grinding and cutting processes, Beta welding helmet range includes three models equipped with either passive or automatic ADF lenses. All Beta models feature the same lightweight but strong shell construction, a comfort headband, GapView flip lens function and magnifying lens frame. The shell design features generous dimensions, providing facial areas excellent protection from arc radiation, whilst allowing good access for tight work-spaces.

Model options and features

- Beta e90P/e90A/e90X
- For welding, tacking, cutting, grinding and inspection
- Passive or ADF welding lens options
- Beta e90X features XA 47 LiFE+ Color ADF including shades 14 and 15
- Beta e90A features SA 60B LiFE+ Color ADF with 60 cm² viewing area
- Deeper protection for facial sides
- Comfort headband
- Light weight – Beta e90P only 473 g
- Magnifying lens option
- See page 46 for models specification



Beta models feature a range of automatic welding filters, plus optional magnifying lenses.





RSA 230

RSA 230 regulation valve enables a controlled air flow to the welder's respirator head-top fitted with a fabric face seal, and is supplied together with Gamma and Beta supplied air models. The positive air pressure created inside the head-top controls the ingress of contaminated air to the breathing zone and ensures a supply of clean breathing air. The RSA 230 regulation valve features a replaceable silencer, decreasing audible airflow noise and is mounted to a comfort back pad, secured to the body with a leather belt.

RSA 230

- Supports Gamma and Beta respirators
- Cost efficient alternative to PAPR models
- Recommended for specified environments
- Comfortable and light in weight
- Alarm alert should the air flow fall below 120 lpm
- Quick release connector to the Airline
- Easily adjusts airflow to the breathing zone
- Must be connected with known breathing air source.



Supplied breathing air solutions offer excellent protection and costs efficiency.



BETA e90 PFA + RSA 230



Beta e90 PFA + RSA 230

9873031

Beta e90 PFA welding helmet, shade 11 passive welding filter, supplied air regulator RSA 230, air hose and air hose adapter for RSA 230, flow meter, leather belt with comfort padding.

Spare parts

Beta e90 FA welding helmet, ADF excluded	SP9873004
Protection plate (90 x 110 x 1.0), 10 pcs	SP9873253
Passive welding filter (shade 11, size 90 x 110)	9873244
Safety plate (90 x 110 x 1.5), 10 pcs	SP9873254
Filter retaining spring	SP3149850
Comfort band padding, 5 pcs	SP013231
Headband	SP009023
Sweatband, 2 pcs	SP9873018
Hatch set	SP015664
Supplied air regulator set RSA 230	SP011617
Supplied air regulator RSA 230	SP012857
Air hose adapter for RSA 230	SP011227
Air hose	SP012253
Silencer for RSA 230, 2 pcs	SP011735
Hose protection cover	SP010788
Flow meter	SP012492
Face seal	SP015537

Welding filters

Shade 8	9873241
Shade 9	9873242
Shade 10	9873243
Shade 11	9873244
Shade 12	9873245
Shade 13	9873246

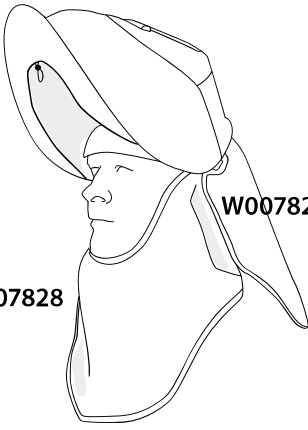
Magnifying lenses

Diopter 1.0 (51 x 108 mm)	9873260
Diopter 1.5 (51 x 108 mm)	9873261
Diopter 2.0 (51 x 108 mm)	9873262
Diopter 2.5 (51 x 108 mm)	9873263

Accessories

Protective head cover	W007827
Protective neck cover	W007828
Universal leather neck protector	SP015579
Leather welding bib (Alfa and Beta)	SP015177
Leather belt	SP010243
Leather belt with comfort padding	SP012999
Shoulder harness	SP011894
Kemppi Tool bag	SP010090
Pressure hose, 10 m	SP013848
Pressure hose, 20 m	SP013849
Pressure hose, 30 m	SP013850

SP015537



W007827

W007828

SP9873253

SP015664

9873244

SP3149850

9873260
9873261
9873262
9873263

SP9873254

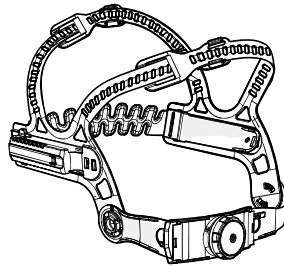


SP015579

SP9873018

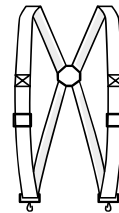
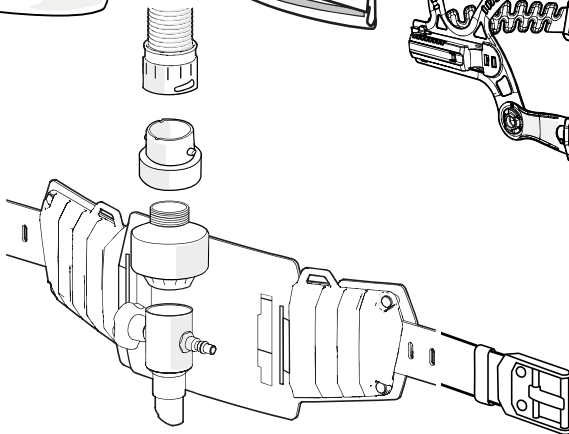
SP009023

SP015177



SP011894

SP010090



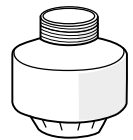
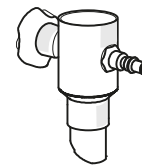
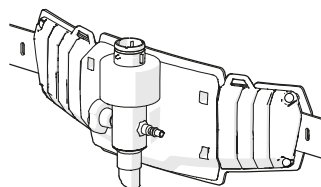
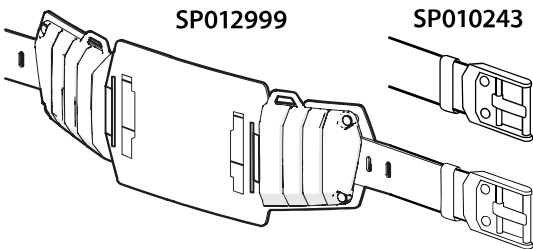
SP012999

SP010243

SP011617

SP012857

SP011735



SP012492

SP012253

SP011227

SP010788

SP013848
SP013849
SP013850

